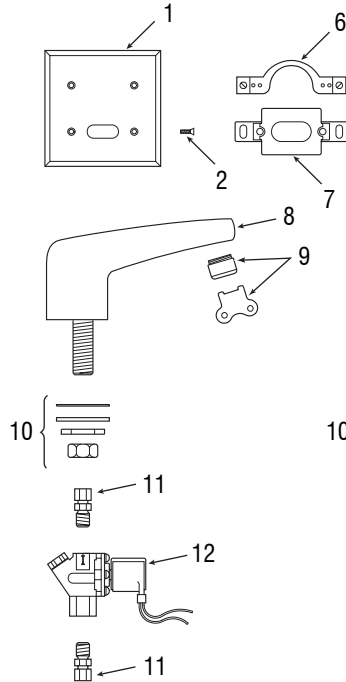
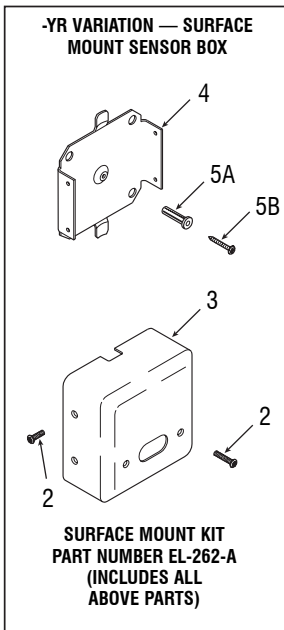


SLOAN®

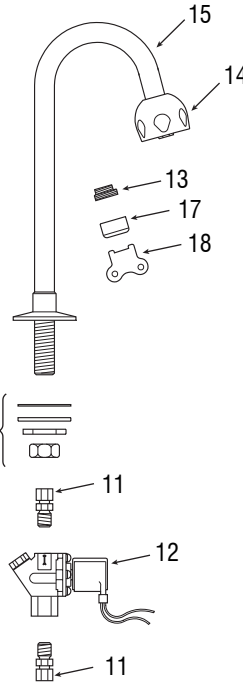
SENSOR FAUCETS

Parts Guide • 24 VAC WALL SENSOR FAUCETS

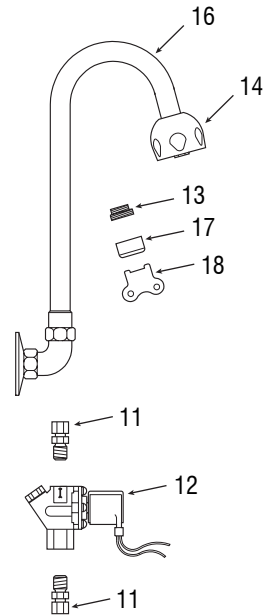
OPTIMA ELF-10, ESF-20 & ESF-30 Faucets



ELF-10



ESF-20

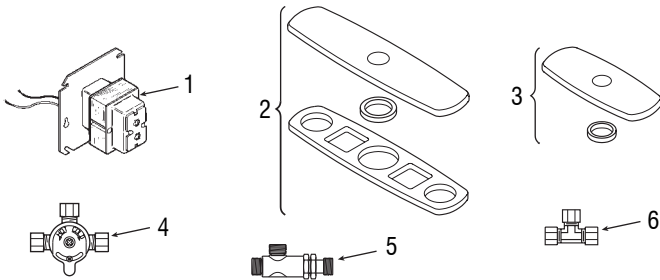


ESF-30

Item No.	Code No.	Part No.	Description
1	0305161	EL-161	Cover Plate (4½" square)
2	0305152	EL-152	Cover Plate Screws (use 5/64" hex wrench)
3	0305341	EL-236	Sensor Box (for -YR Variation)
4	0305345	EL-242	Wall Mounting Bracket Plate (for -YR Variation)
5A	0311048	K-57	Anchor (for -YR Variation)
5B	0311041	K-44	Slotted Wood Screw (for -YR Variation)
6	0305323	EL-168-A	Yoke Assembly
7	3305723	EL-1500-LL	OPTIMA Lavatory Sensor
	3305728	EL-1500-LL-T	OPTIMA Lavatory Sensor with 30 second timeout
8	0365162	ETF-595-A	Faucet Spout Assembly (ELF-10)
9	3365092	ETF-1023-A	0.5 gpm (1.9 Lpm) Spray Head with Key (male thread)
	3365093	ETF-1024-A	2.2 gpm (8.3 Lpm) Aerator Spray Head with Key (male thread)
	3365162	ETF-1029-A	2.2 gpm (8.3 Lpm) Laminar Flow Spray Head (male thread)
	0305927	ETF-435	Replacement Key only
10	0305768	EL-310-A	Mounting Hardware Kit (ELF-10 and ESF-20 only) includes Washer, Locking Nut, Coupling Nut, Rubber Washer, and Washer Cone
11	0305459	ETF-61	3/8" Male Compression Fitting

Item No.	Code No.	Part No.	Description
12	3305527	ETF-1004-A	24 VAC Solenoid Valve Assembly includes ETF-61 male Compression Fitting, Input Power Cable and Solenoid Valve
13	0305784	ETF-178	Aerator Adapter (ESF-20 and ESF-30 only; not required for Shower Spray Head)
14	0328134	AC-55-A	Shower Spray Head Assembly, 2.2 gpm (8.3 Lpm)
15	0328139	AC-92-A	Deck-Mounted Faucet with Gooseneck Spout (ESF-20)
	0305797	AC-93-A	Deck-Mounted Faucet with Surgical Bend Gooseneck Spout (ESF-20-S)
16	0328140	AC-97-A	Back-Mounted Faucet with Gooseneck Spout (ESF-30)
	0305798	AC-94-A	Back-Mounted Faucet with Surgical Bend Gooseneck Spout (ESF-30-S)
17	3365091	ETF-1021-A	0.5 gpm (1.9 Lpm) Spray Head with Key (female thread)
	3365090	ETF-1022-A	2.2 gpm (8.3 Lpm) Aerator Spray Head with Key (female thread)
	3365160	ETF-1027-A	2.2 gpm (8.3 Lpm) Laminar Flow Spray Head with Key (female thread)
18	0305927	ETF-435	Replacement Key only
—	0305368	ETF-262-A	Surface Mount Kit includes Items 2, 3, 4, 5A and 5B (for -YR Variation)
—	3305577	ETF-1009-A	Solenoid Valve Repair Kit includes Replacement Filter

Accessories for ELF-10, ESF-20 & ESF-30 Faucets



Item No.	Code No.	Part No.	Description
1	0345154	ELF-154	120 VAC Input/24 VAC Output Transformer (Note: Other Transformers available — consult factory)
2	3365601	ETF-431-A	8" Trim Plate Kit
3	3365468	ETF-312-A	4" Trim Plate Kit
4	3326009	MIX-60-A	Mechanical Mixing Valve (BDM Variation)
5	3326020	MIX-135-A	Thermostatic Mixing Valve (BDT Variation)
6	3365461	ETF-617-A	3/8" Bak-Chek® Tee Compression Fitting

Troubleshooting Guide for ELF-10, ESF-20 and ESF-30 Faucets

1. PROBLEM: Faucet does not function (RED indicator light does not illuminate when user steps in front of Sensor).

CAUSE: No power is supplied to Sensor.

SOLUTION: Ensure that power is turned "ON." Check Transformer, Leads and Connections. Repair or replace as necessary.

CAUSE: Sensor is not operating.

SOLUTION: Replace EL-1500-LL or EL-1500-LL-T Sensor.

2. PROBLEM: Faucet does not function (RED indicator light appears when user steps in front of Sensor BUT Solenoid does NOT "CLICK").

CAUSE: Debris is clogging Solenoid.

SOLUTION: Disassemble, clean, flush and reassemble.

CAUSE: Solenoid electrical wiring is not correctly connected.

SOLUTION: Check Solenoid Connections.

CAUSE: Solenoid is defective.

SOLUTION: Replace ETF-1004-A Solenoid.

3. PROBLEM: No water is delivered when Faucet is activated.

INDICATOR: Solenoid "CLICK" can be heard:

CAUSE: Water supply stop(s) may be partially closed.

SOLUTION: Open supply stop(s).

CAUSE: Solenoid Filter is clogged.

SOLUTION: Shut off water supply. Remove, clean and reinstall Solenoid Filter. Replace ETF-1009-A Solenoid Filter if necessary.

4. PROBLEM: Very Low Flow or Slow Dribble.

CAUSE: Water supply stop(s) may be partially closed.

SOLUTION: Open supply stop(s) completely.

CAUSE: Solenoid Filter is clogged.

SOLUTION: Shut off water supply. Remove, clean and reinstall Solenoid Filter. Replace ETF-1009-A Solenoid Filter if necessary.

CAUSE: Aerator or Spray Head is clogged.

SOLUTION: Remove, clean and reinstall.

CAUSE: Debris is clogging Solenoid.

SOLUTION: Disassemble, clean, flush and reassemble.

5. PROBLEM: Faucet does not stop delivering water or continues to drip after user is no longer detected (power is "ON" and RED indicator light is flashing).

CAUSE: Non-permanent target is still detected in range of Sensor after user exits range.

SOLUTION: Remove non-permanent target. If the target is a new permanent target (i.e., a new wall or partition), turn 24 VAC power supply "OFF" for fifteen (15) seconds. Turn power supply "ON". Allow the Sensor to complete the start-up procedure.

CAUSE: Sensor has failed or is defective.

SOLUTION: Replace EL-1500-LL or EL-1500-LL-T Sensor.

6. PROBLEM: Faucet does not stop delivering water or continues to drip after user is no longer detected (even after power supply has been disconnected).

CAUSE: Solenoid Valve is installed backward.

SOLUTION: Disconnect Solenoid. Reconnect Solenoid so the water flow is directed toward the Faucet.

CAUSE: The Solenoid is dirty and is not closing properly.

SOLUTION: Remove Solenoid Operator, clean and reassemble.

Care and Cleaning Instructions

DO NOT USE abrasive or chemical cleaners to clean Faucets that may dull the luster and attack the chrome or special decorative finishes. Use ONLY soap and water, then wipe dry with a clean towel or cloth.

When cleaning the bathroom tile, protect the Faucet from any splattering of cleaner. Acids and cleaning fluids can discolor or remove chrome plating.

If further assistance is required, please contact the Sloan Valve Company Installation Engineering Department at:

1-888-SLOAN-14 (1-888-756-2614)

NOTICE: The information contained in this document is subject to change without notice.

LIMITED WARRANTY

Sloan Valve Company warrants its Faucet Products to be made of first class materials, free from defects of material or workmanship under normal use and to perform the service for which they are intended in a thoroughly reliable and efficient manner when properly installed and serviced, for a period of three years (one year for special finishes) from date of purchase. During this period, Sloan Valve Company will, at its option, repair or replace any part or parts which prove to be thus defective if returned to Sloan Valve Company, at customer's cost, and this shall be the sole remedy available under this warranty. No claims will be allowed for labor, transportation or other incidental costs. This warranty extends only to persons or organizations who purchase Sloan Valve Company's products directly from Sloan Valve Company for purpose of resale.

THERE ARE NO WARRANTIES WHICH EXTEND BEYOND THE DESCRIPTION ON THE FACE HEREOF. IN NO EVENT IS SLOAN VALVE COMPANY RESPONSIBLE FOR ANY CONSEQUENTIAL DAMAGES OF ANY MEASURE WHATSOEVER.

SLOAN VALVE COMPANY • 10500 SEYMOUR AVENUE • FRANKLIN PARK, IL 60131

Phone: 1-800-9-VALVE-9 or 1-847-671-4300 • Fax: 1-800-447-8329 or 1-847-671-4380 • <http://www.sloanvalve.com>